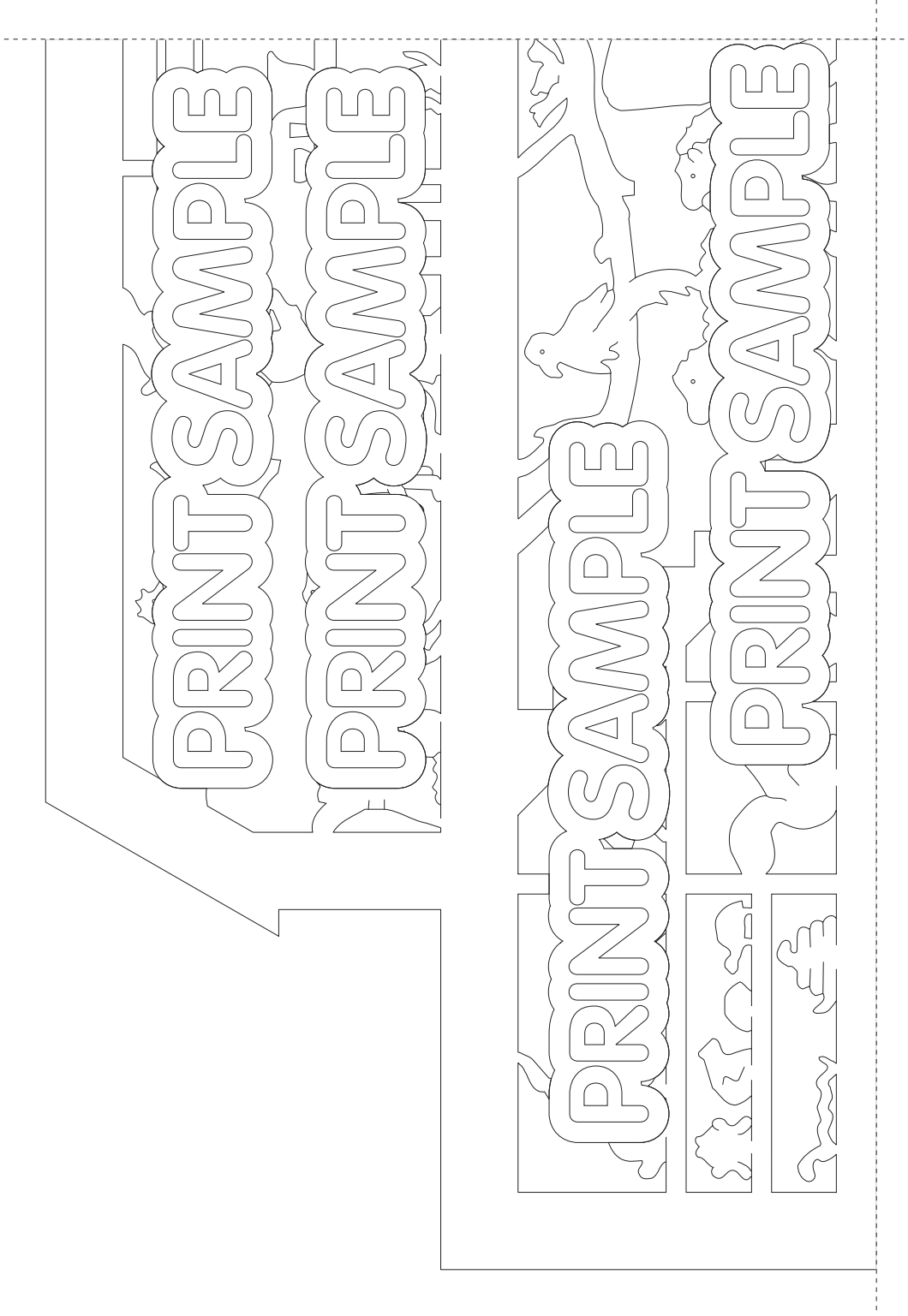


Noah's Ark

1/4" x 10-1/2" x 15-1/2" wood of choice

Designed by Sheila Polhemus

Cut the pattern sheets on the dashed lines and tape them together for a full size pattern

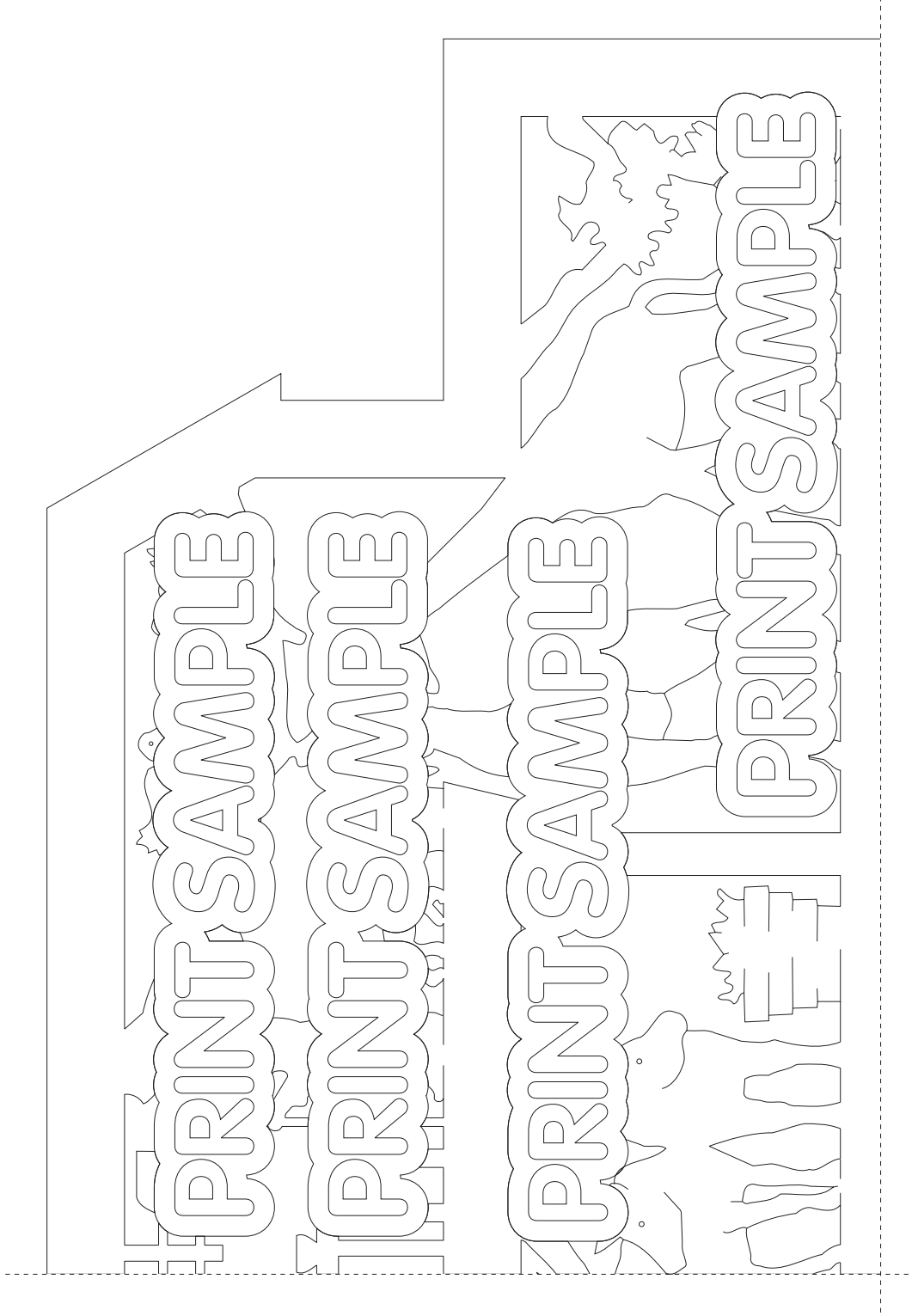


Noah's Ark

1/4" x 10-1/2" x 15-1/2" wood of choice

Designed by Sheila Polhemus

Cut the pattern sheets on the dashed lines and tape them together for a full size pattern

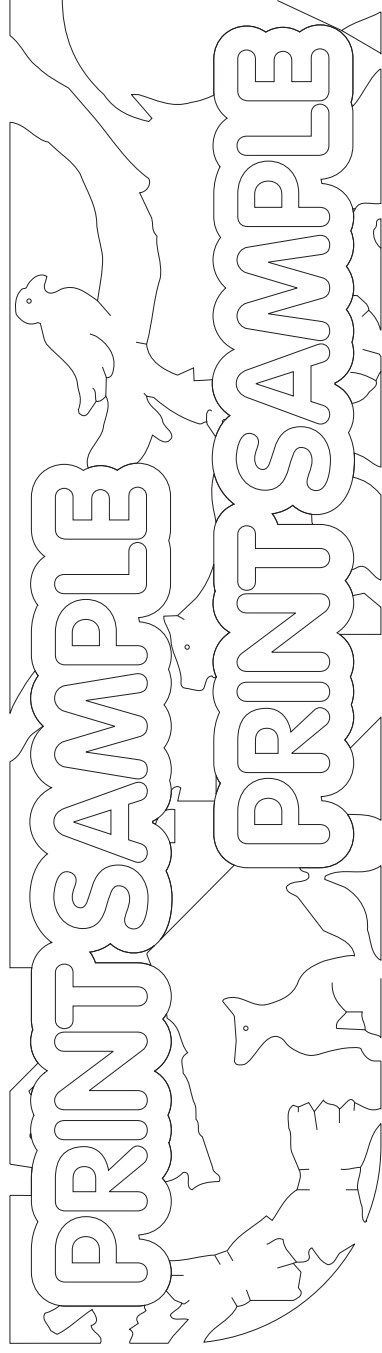
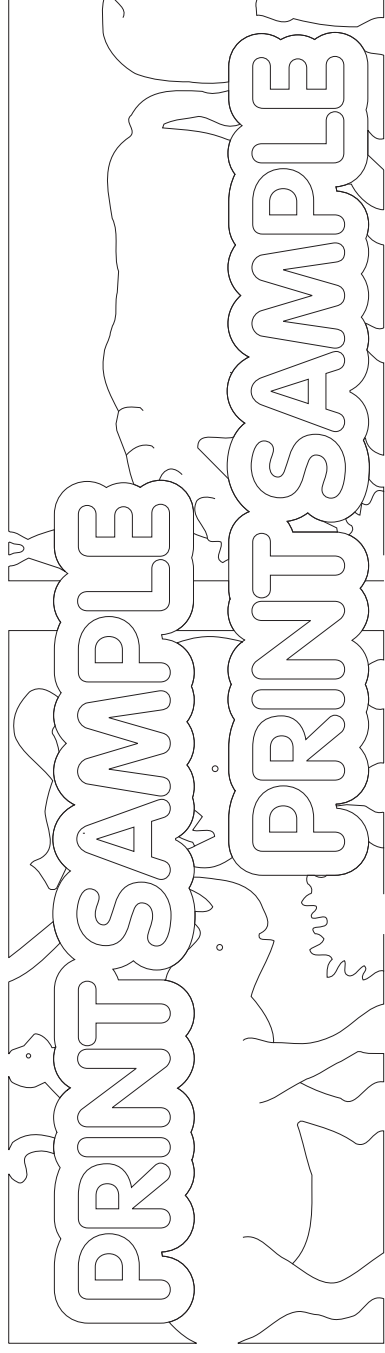


Noah's Ark

1/4" x 10-1/2" x 15-1/2" wood of choice

Designed by Sheila Polhemus

Cut the pattern sheets on the dashed lines and tape them together for a full size pattern



Noah's Ark

1/4" x 10-1/2" x 15-1/2" wood of choice

Designed by Sheila Polhemus

Cut the pattern sheets on the dashed lines and tape them together for a full size pattern

